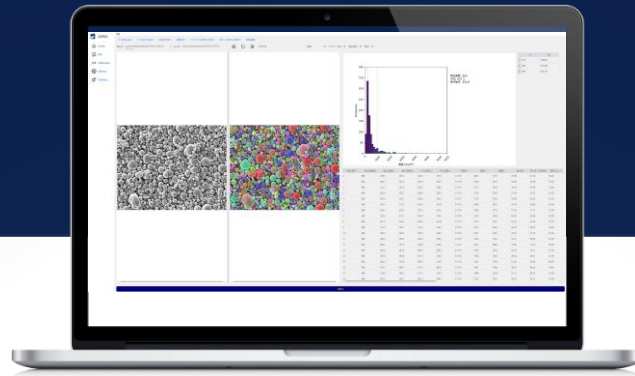


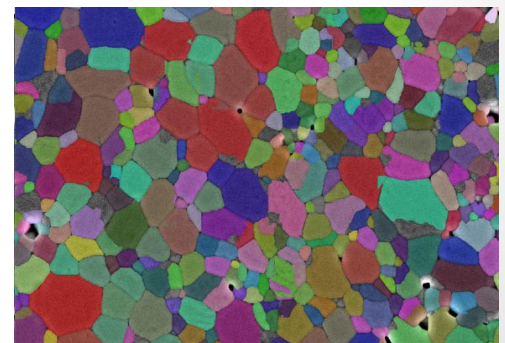
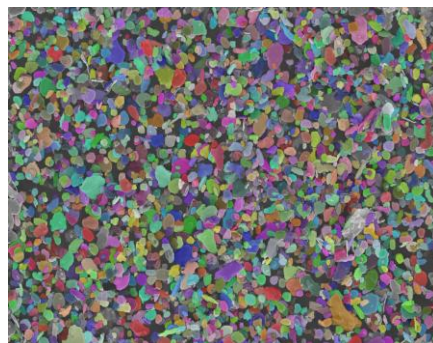
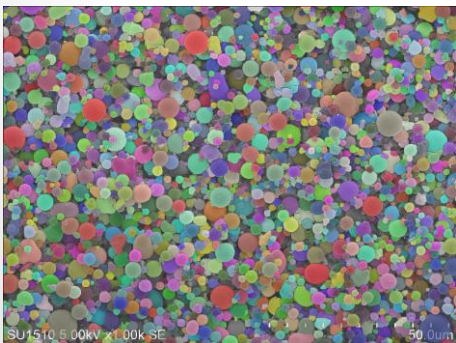
# Particle **AI** Image Analysis Software

## "AIPAS"



**Powered by AI trained on 2 million+ particles for ultra-precise, one-click image analysis**

- ◆ Trained on 50+ types - accurate AI results
- ◆ Analyzes complex shapes like grains and sintered Bodies
- ◆ Train your own custom AI model – classification of particles also available
- ◆ Supports SEM, TEM, and S-TEM images
- ◆ Works Fully Offline : No cloud upload. Image confidentiality ensured



### Target Particle & Powder Examples

- ✓ Particles for Electronic Materials (e.g., MLCC)
- ✓ Battery Material Particles (e.g., Cathode, Anode, Electrolyte)
- ✓ Functional Particles (Inorganic, Resin)
- ✓ Metal and Non-metal Powders
- ✓ Ceramic Particles and Sintered Bodies
- ✓ Ink and Pigment Particles
- ✓ Porous and Foamed Materials
- ✓ Cosmetic Ingredient Particles and Emulsions
- ✓ Pharma and Dental Material Powders, etc.

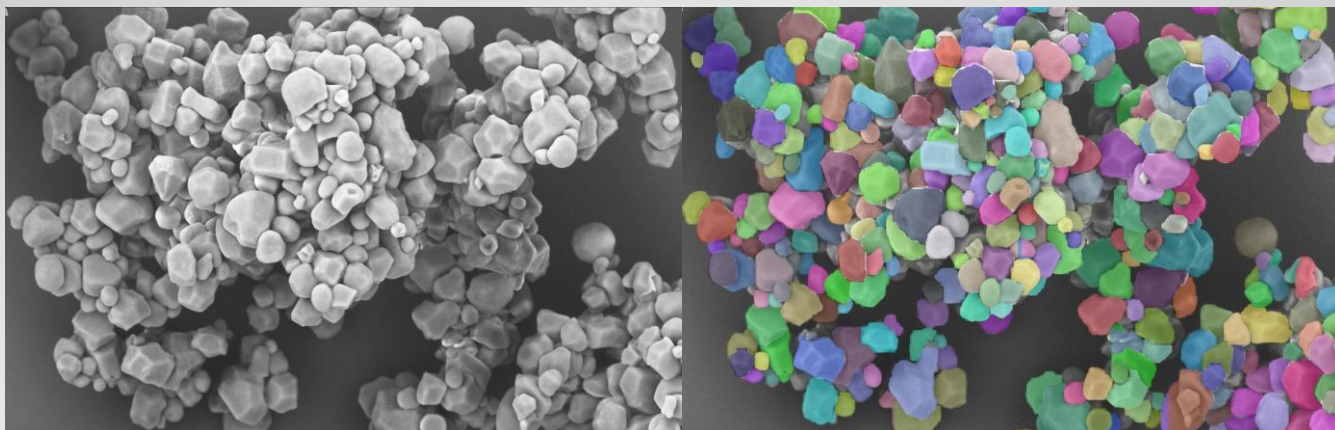
### Available Measurement Parameters

- Total Count
- Area
- Maximum Length
- Vertical Feret Diameter
- Horizontal Feret Diameter
- Feret Aspect Ratio
- Aspect Ratio
- Centroid Coordinates
- Geometric Center
- Perimeter
- Circularity
- Equivalent Diameter (Radius, Diameter)
- Voronoi Area
- Inter-centroid Distance
- Porosity
- Spherical Volume
- Mean: D10, D50, D90

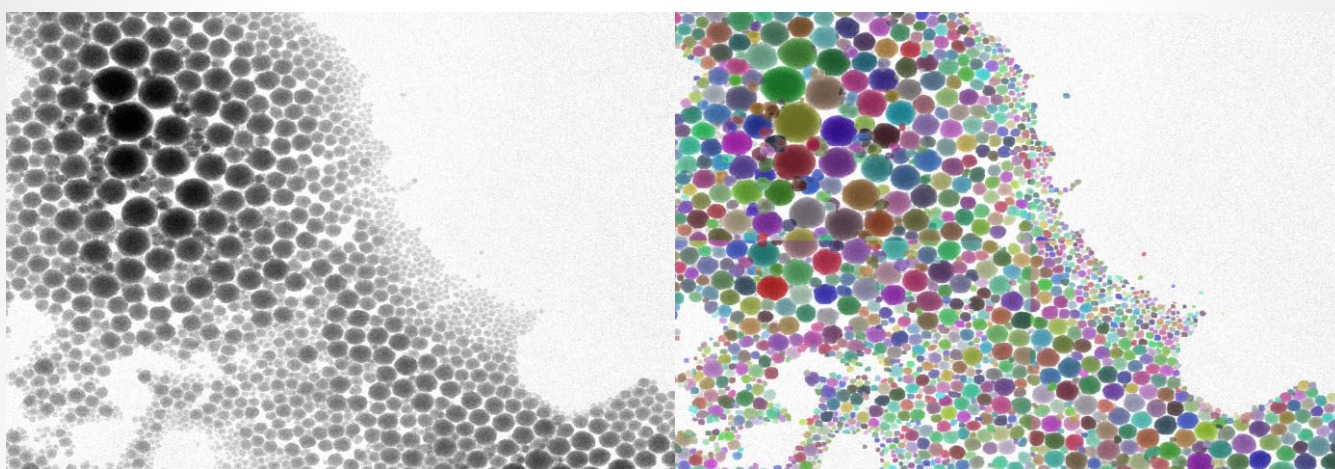
Additional measurement items can be added upon request

Powered by multiple theme-specific **AI models** trained on diverse datasets

**Even Irregular Shapes: Detect only the primary particles from the aggregation**



**Supports TEM imaging of nanoparticles and similar materials**



### **Addressing the Following Customer Needs**

- Measure clustered particles from SEM images without dispersants
- Unstable analyzer readings — accurate particle size and dispersion data required
- Easily build AI models for your SEM/TEM images
- Offline analysis requested to maintain data privacy



#### **Built-in Trained AI Model**

AI trained on high-quality data at scale



#### **Batch Image Support**

Fast Processing Even for Large Image Sets



#### **AI-Based Analysis**

No Binarization or Recipe Setup Required



#### **Quick Result Check**

Side-by-Side Image & Analysis Display



#### **Measurement Result Evaluation**

Instant Overview of Measurement Performance



#### **GUI**

Simplified UI Prioritizing Clarity and Key Features



#### **Language**

Display Available in English and Chinese



#### **Offline Use**

Works Without Internet Connection



#### **Perpetual License**

Unlimited Use After Installation



#### **Mouse-Only Operation**

Just click  
No Coding Required

## **AIPAS Special Campaign Now Underway**

**If you provide up to 30 images for analysis,  
we will use AIPAS to analyze them for free and deliver an analysis report**

**May 1, 2025 – August 31, 2025**

BLUE TAG Co., Ltd Email: [contact@btag.jp](mailto:contact@btag.jp) TEL: +81 3-4405-9122

